



DESCOR® PREMIUM

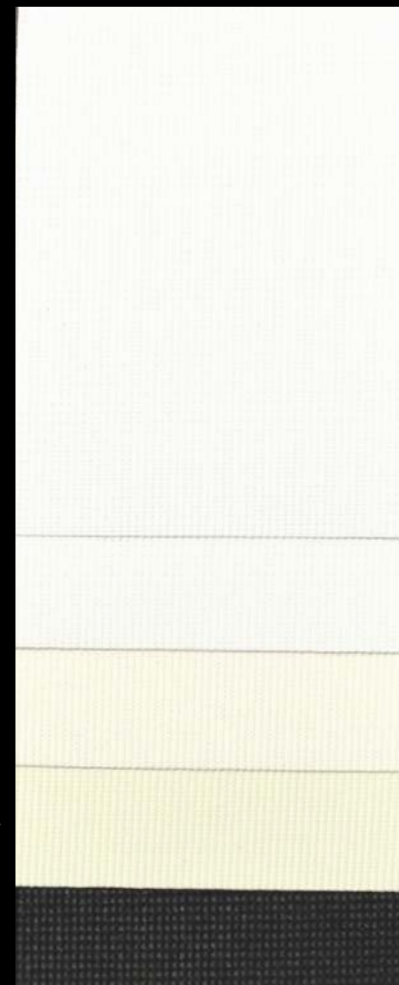
WEISS/ WHITE
599130 - 00900 450

NATURWEISS/ NATURAL WHITE
599130 - 00900 469

BEIGE
599130 - 00900 451

GELB/ YELLOW
599130 - 00900 457

SCHWARZ/ BLACK
699148 - 00347 264



REF.

DESCOR® PREMIUM

Colour number
599130 - 00900 - ###



polyester knitted fabric with polyurethane coating (PU)



M1 **B1** **DIN EN 13501-1 B-s1, d0**



245 g/m² ± 5%



ca. 350 μm



15 x superior to PVC films

Specs



| | | | | | |
|-----------------------|--------------|---------------|--------------|---------------|--------------|
| Gross in cm (inch) | 320 (126) | 360* (142) | 420 (165) | 460* (181) | 520 (205) |
| Net in cm (inch) | 310 (122) | 350* (138) | 410 (161) | 450* (177) | 505 (199) |

* on request

DESCOR® PREMIUM

Colour number
699148 - 00347 264

polyester knitted fabric with polyurethane coating (PU)

B1 **DIN EN 13501-1 B-s1, d0**

180 g/m² ± 5%

ca. 350 μm ± 10

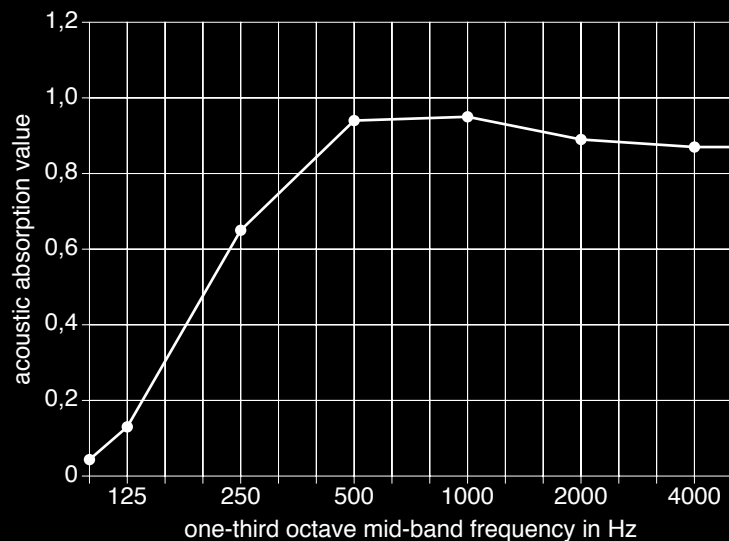


15 x superior to PVC films

| | | | |
|-----------------------|--------------|--------------|--------------|
| Gross in cm (inch) | 320 (126) | 420 (165) | 520 (205) |
| Net in cm (inch) | 310 (122) | 410 (161) | 505 (199) |

DESCOR® PREMIUM solely applies to building professionals.
The system is exclusively used by specialists trained in this technique.
A list of recommended approved fitters is available on request.

DESCOR®
WALL & CEILING SYSTEM



| | |
|--------------------------------------|------|
| Acoustic absorption value α_w | 0,90 |
| acoustic absorption class | A |

Type of assembly E-50 according to DIN EN ISO 354.
Textile in front of total 50 mm,
included 40 mm ISOVER SSP 2 and 10 mm airspace.



WEISS/ WHITE
00900 - 085

SCHWARZ/ BLACK
00347 - 086

REF.

DESCOR® PREMIUM Acoustic

Colour number (white)
699144 - 00900 - 085



polyester knitted fabric with polyurethane coating (PU)
with micro-perforation (invisible)
air permeable



B1 **DIN EN 13501-1**
B-s1, d0



200 g/m² ± 5%



ca. 390 µm ± 10



50m/ 55yrd



15 x superior to PVC films

Specs



DIN EN ISO 354 -
test report no 086-12-G01
(Akustikbüro Krämer + Stegmeier)

α_w



| | | | |
|-----------------------|--------------|--------------|--------------|
| Gross in cm (inch) | 320 (126) | 420 (165) | 520 (205) |
| Net in cm (inch) | 310 (122) | 410 (161) | 505 (199) |

DESCOR® PREMIUM Acoustic

Colour number (black)
699144 - 00347 - 086

polyester knitted fabric with polyurethane coating (PU)
with micro-perforation (invisible)
air permeable

B1 **DIN EN 13501-1**
B-s1, d0

185 g/m² ± 5%

ca. 380 µm ± 10

50m/ 55yrd

15 x superior to PVC films



DIN EN ISO 354 -
test report no 086-12-G01
(Akustikbüro Krämer + Stegmeier)

| | | | |
|-----------------------|--------------|--------------|--------------|
| Gross in cm (inch) | 320 (126) | 420 (165) | 520 (205) |
| Net in cm (inch) | 310 (122) | 410 (161) | 505 (199) |

DESCOR® PREMIUM solely applies to building professionals.
The system is exclusively used by specialists trained in this technique.
A list of recommended approved fitters is available on request.

DESCOR®
WALL & CEILING SYSTEM



DESCOR® PREMIUM star

GRAU/ GRAY
00900 - 167

DUNKELBEIGE/ DARK BEIGE
00900 - 157

GRÜN/ GREEN
00900 - 165

SCHWARZ/ BLACK
00347 - 164



REF.

DESCOR® PREMIUM Star

Colour number

699143 - ##### - ###



polyester knitted fabric with polyurethane coating (PU)



B1 * **DIN EN 13501-1**
B-s1, d0

* testing is instructed



250 g/m² ± 5%

185 g/m² ± 5% (black)



ca. 350 µm – 390 µm



15 x superior to PVC films



with aluminium pigment



| | | | |
|-----------------------|--------------|--------------|--------------|
| Gross in cm (inch) | 320 (126) | 420 (165) | 520 (205) |
| Net in cm (inch) | 310 (122) | 410 (161) | 505 (199) |

DESCOR® PREMIUM solely applies to building professionals.
The system is exclusively used by specialists trained in this technique.
A list of recommended approved fitters is available on request.

**DESCOR**[®]
WALL & CEILING SYSTEM

DESCOR[®] PREMIUM antibac



WEISS/ WHITE
00900 - 550

NATURWEISS/ NATURAL WHITE
00900 - 569

REF.

DESCOR® PREMIUM antibac

Colour number
599131 - 00900 - ###



polyester knitted fabric with polyurethane coating (PU)
and permanent antibacterial additive
bacteria reduction > 99,99 %



245 g/m² ± 5%



ca. 350 µm



15 x superior to PVC films



| | | | | | |
|-----------------------|--------------|---------------|--------------|---------------|--------------|
| Gross in cm (inch) | 320 (126) | 360* (142) | 420 (165) | 460* (181) | 520 (205) |
| Net in cm (inch) | 310 (122) | 350* (138) | 410 (161) | 450* (177) | 505 (199) |

* on request



DESCOR® PREMIUM solely applies to building professionals.
The system is exclusively used by specialists trained in this technique.
A list of recommended approved fitters is available on request.

 **DESCOR**[®]
WALL & CEILING SYSTEM

DESCOR[®] LIGHT



REF.

DESCOR® LIGHT
Colour number
599129 - 00900 - 369



polyester knitted fabric with polyurethane coating (PU)



M1 **DIN EN 13501-1 B-s1, d0** **B1**



230 g/m² ± 5%



ca. 430 µm



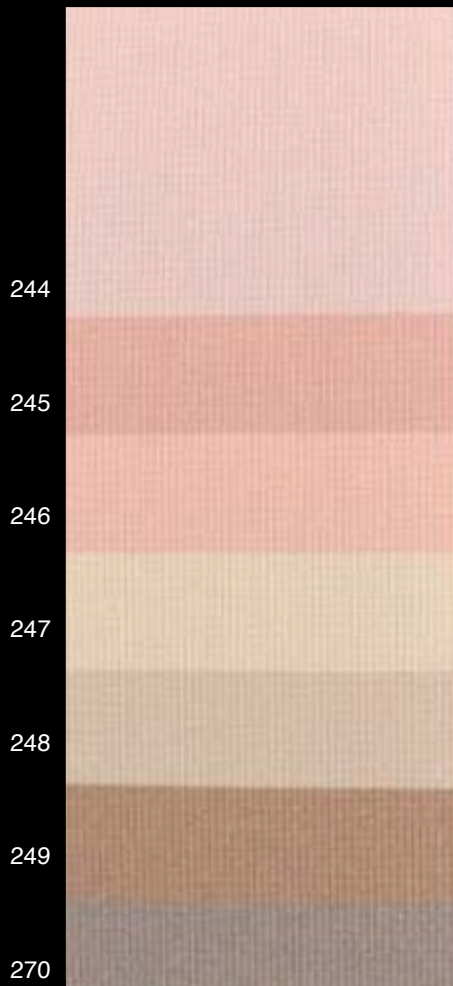
15 × superior to PVC films



| | | | |
|-----------------------|--------------|--------------|--------------|
| Gross in cm (inch) | 320 (126) | 420 (165) | 520 (205) |
| Net in cm (inch) | 310 (122) | 410 (161) | 505 (199) |

DESCOR® PREMIUM solely applies to building professionals.
The system is exclusively used by specialists trained in this technique.
A list of recommended approved fitters is available on request.


DESCOR®
WALL & CEILING SYSTEM



REF.

DESCOR® PREMIUM colour

Colour number
699142 - 00900 - ###



polyester knitted fabric with polyurethane coating (PU)



M1 **B1** **DIN EN 13501-1 B-s1, d0**



ca. 230 g/m² – 260 g/m² ± 5%



ca. 360 μm – 410 μm ± 10



15 x superior to PVC films

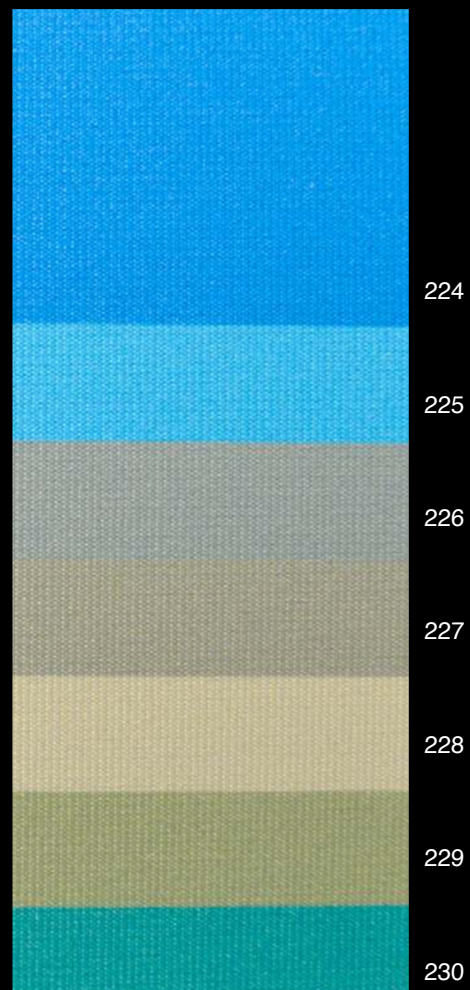
Specs



| | | |
|-----------------------|--------------|--------------|
| Gross in cm (inch) | 315 (124) | 510 (201) |
| Net in cm (inch) | 310 (122) | 505 (199) |

DESCOR® PREMIUM solely applies to building professionals.
The system is exclusively used by specialists trained in this technique.
A list of recommended approved fitters is available on request.


DESCOR®
WALL & CEILING SYSTEM



REF.

DESCOR® PREMIUM colour

Colour number
699142 - 00900 - ###



polyester knitted fabric with polyurethane coating (PU)



M1 **B1** **DIN EN 13501-1 B-s1, d0**



ca. 230 g/m² – 260 g/m² ± 5%



ca. 360 μm – 410 μm ± 10



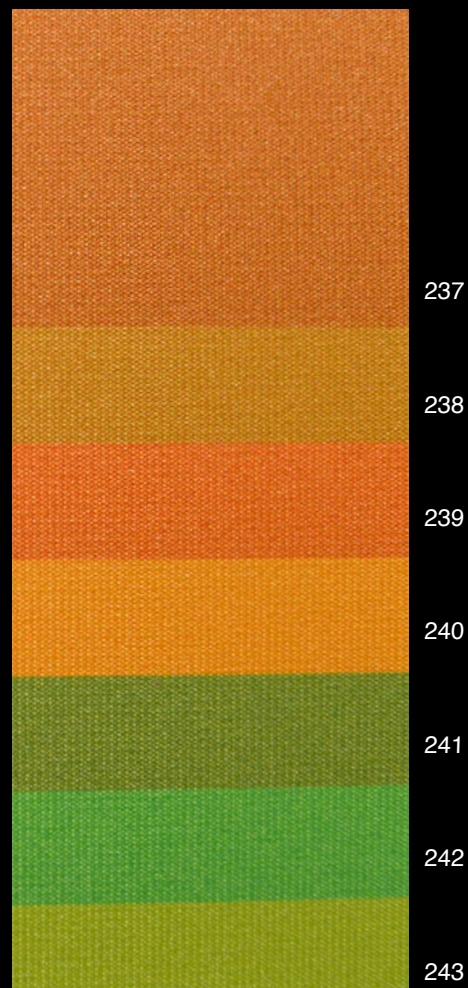
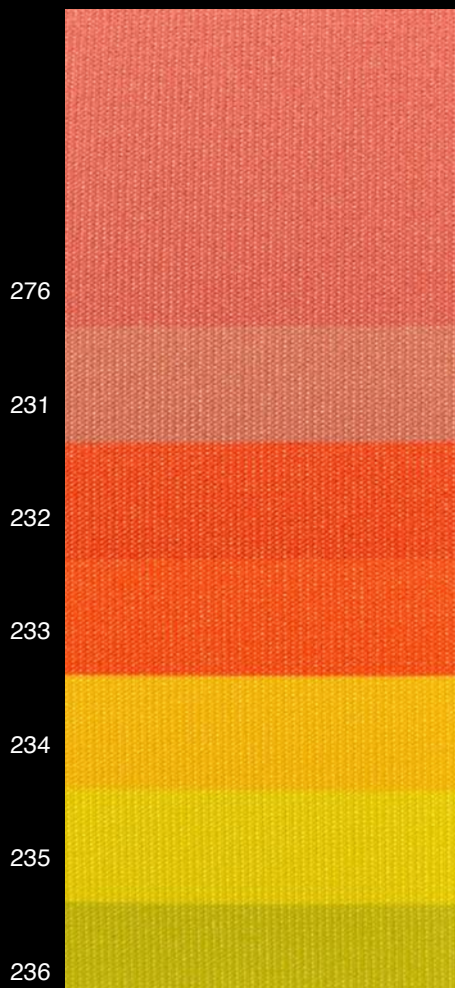
15 x superior to PVC films

Specs



| | | |
|-----------------------|--------------|--------------|
| Gross in cm (inch) | 315 (124) | 510 (201) |
| Net in cm (inch) | 310 (122) | 505 (199) |

DESCOR® PREMIUM solely applies to building professionals.
The system is exclusively used by specialists trained in this technique.
A list of recommended approved fitters is available on request.



REF.

DESCOR® PREMIUM colour

Colour number
699142 - 00900 - ###



polyester knitted fabric with polyurethane coating (PU)



M1 **B1** **DIN EN 13501-1 B-s1, d0**



ca. 230 g/m² – 260 g/m² ± 5%



ca. 360 μm – 410 μm ± 10



15 x superior to PVC films

Specs



| | | |
|-----------------------|--------------|--------------|
| Gross in cm (inch) | 315 (124) | 510 (201) |
| Net in cm (inch) | 310 (122) | 505 (199) |

DESCOR® PREMIUM solely applies to building professionals.
The system is exclusively used by specialists trained in this technique.
A list of recommended approved fitters is available on request.



REF.

DESCOR® PREMIUM gradient

Colour number

699149 - 00900 - ###



polyester knitted fabric with polyurethane coating (PU)



B1 * **DIN EN**
13501-1
B-s1, d0 *



250 g/m² – 310 g/m² ± 5%



ca. 350 μm – 410 μm ± 10



15 x superior to PVC films



with aluminium pigment

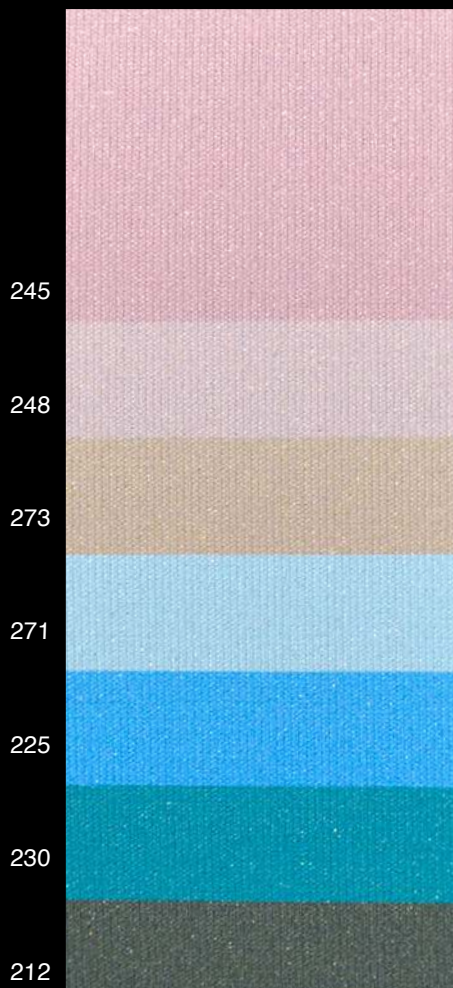


| | | | |
|-----------------------|--------------|--------------|--------------|
| Gross in cm (inch) | 310 (122) | 410 (161) | 505 (199) |
| Net in cm (inch) | 305 (120) | 405 (159) | 500 (197) |

* testing is instructed

DESCOR® PREMIUM solely applies to building professionals.
The system is exclusively used by specialists trained in this technique.
A list of recommended approved fitters is available on request.


DESCOR®
WALL & CEILING SYSTEM



REF.

DESCOR® PREMIUM gradient

Colour number
699149 - 00900 - ###



polyester knitted fabric with polyurethane coating (PU)



B1 * **DIN EN**
13501-1
B-s1, d0 *



250 g/m² – 310 g/m² ± 5%



ca. 350 μm – 410 μm ± 10



15 x superior to PVC films



with aluminium pigment

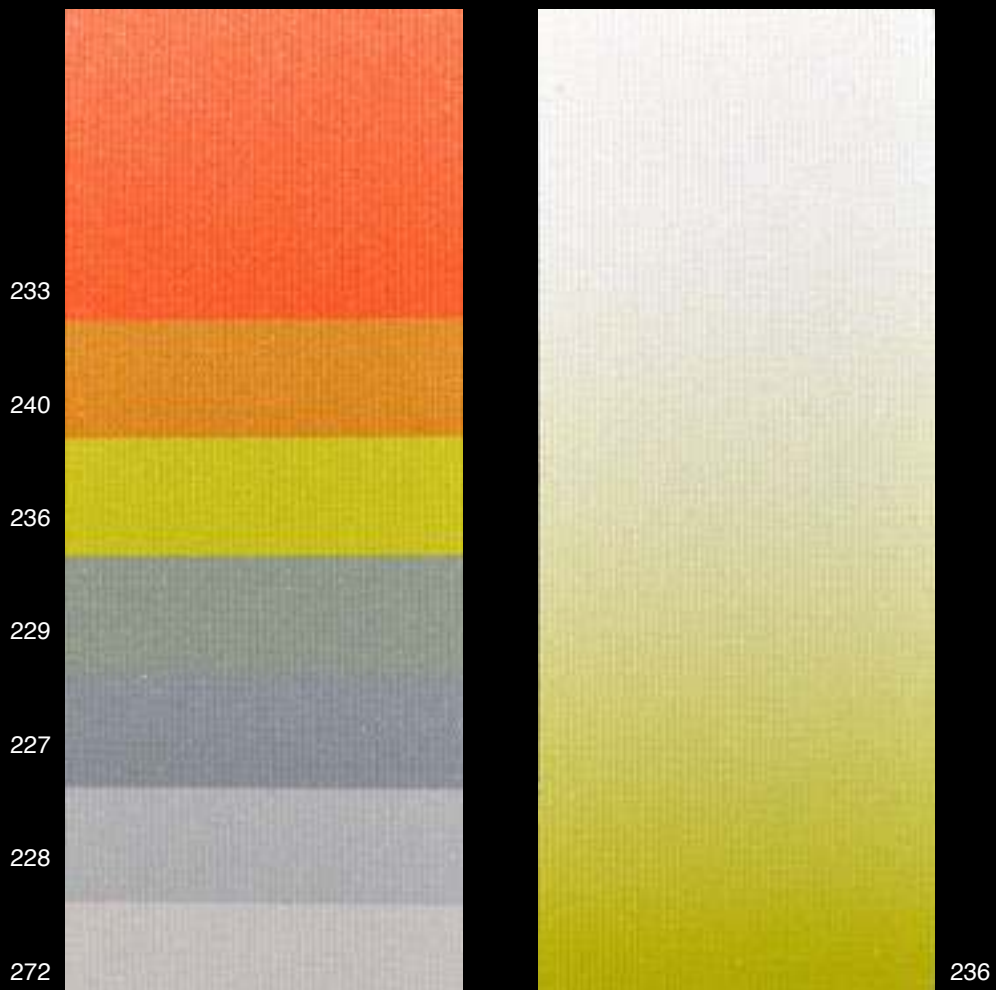


| | | | |
|-----------------------|--------------|--------------|--------------|
| Gross in cm (inch) | 310 (122) | 410 (161) | 505 (199) |
| Net in cm (inch) | 305 (120) | 405 (159) | 500 (197) |

* testing is instructed

DESCOR® PREMIUM solely applies to building professionals.
The system is exclusively used by specialists trained in this technique.
A list of recommended approved fitters is available on request.


DESCOR®
WALL & CEILING SYSTEM



REF.

DESCOR® PREMIUM gradient

Colour number
699149 - 00900 - ###



polyester knitted fabric with polyurethane coating (PU)



B1 * **DIN EN**
13501-1
B-s1, d0 *



250 g/m² – 310 g/m² ± 5%



ca. 350 μm – 410 μm ± 10



50m/55yrd



15 x superior to PVC films

Further
Details

with aluminium pigment



| | | | |
|-----------------------|--------------|--------------|--------------|
| Gross in cm (inch) | 310 (122) | 410 (161) | 505 (199) |
| Net in cm (inch) | 305 (120) | 405 (159) | 500 (197) |

* testing is instructed

DESCOR® PREMIUM solely applies to building professionals.
The system is exclusively used by specialists trained in this technique.
A list of recommended approved fitters is available on request.


DESCOR®
WALL & CEILING SYSTEM

 **DESCOR**[®]
WALL & CEILING SYSTEM

DESCOR[®] PREMIUM design



DESCOR PREMIUM design
599130 - 00900 - 450



DESCOR PREMIUM star design
699143 - 00900 - 157



DESCOR PREMIUM acoustic design
699144 - 00900 - 085

REF.

DESCOR® PREMIUM design

Colour number
599130 - 00900 - 450



polyester knitted fabric
with polyurethane coating (PU)



245 g/m² – 315 g/m² ± 5%



ca. 350 μm – 410 μm ± 10



15 x superior to PVC films

Specs



DESCOR® PREMIUM star design

Colour number
699143 - 00900 - 157

polyester knitted fabric
with polyurethane coating (PU)

250 g/m² – 310 g/m² ± 5%

ca. 350 μm – 410 μm

15 x superior to PVC films



DESCOR® PREMIUM acoustic design

Colour number
699144 - 00900 - 085

polyester knitted fabric
with polyurethane coating (PU) and
micro-perforation (invisible); air permeable

185 g/m² – 245 g/m² ± 5%

ca. 380 μm – 440 μm ± 10

15 x superior to PVC films



Further
Details

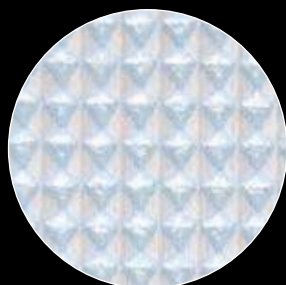
All fabrics can be digital printed with individual images and sizes up to 5 m (small side).

DESCOR® PREMIUM solely applies to building professionals.
The system is exclusively used by specialists trained in this technique.
A list of recommended approved fitters is available on request.

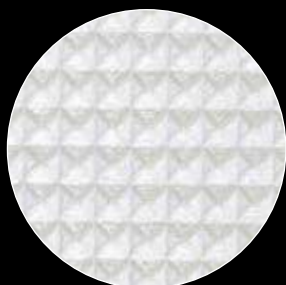
 **DESCOR®**
WALL & CEILING SYSTEM

PONGS®

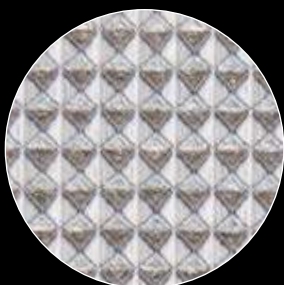
SILENCIO® Size 5



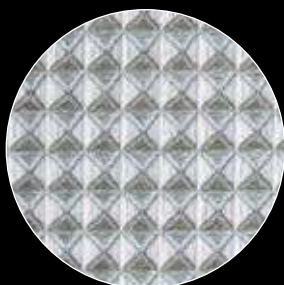
104
Arctic Ice



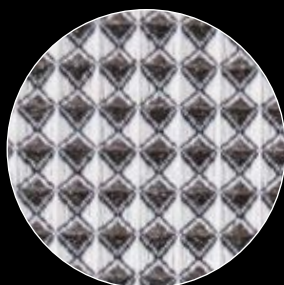
303
Crystal



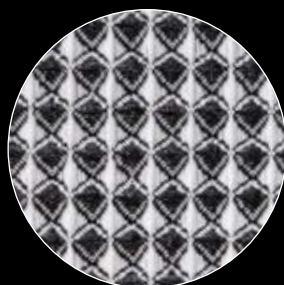
945
Metal



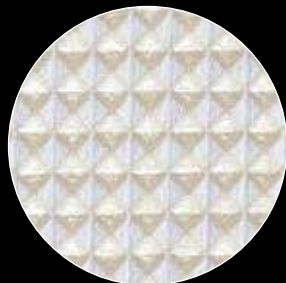
305
Silver Grey



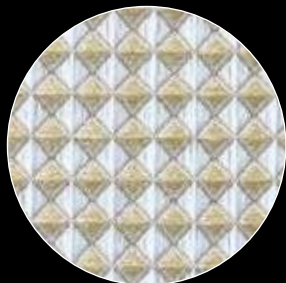
589
Turkish Coffee



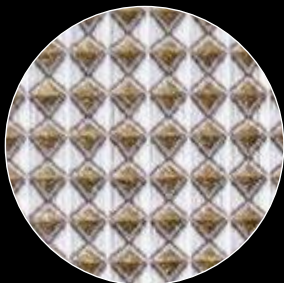
347
Nero



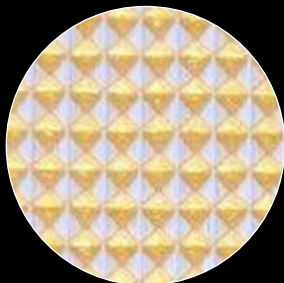
501
Desert Sand



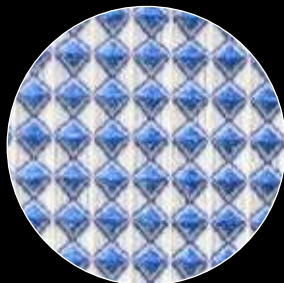
525
Leaves



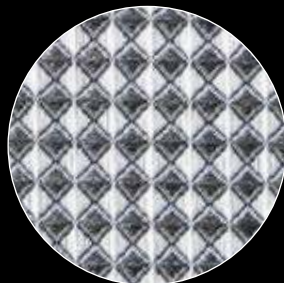
947
Walnut



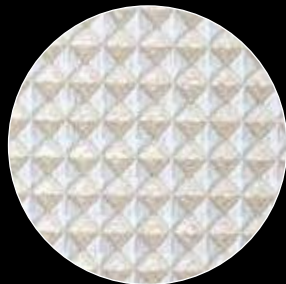
733
Canary



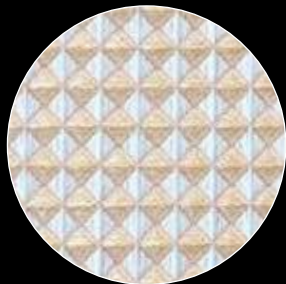
162
Deep Water



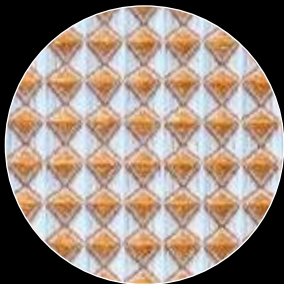
333
Moskito



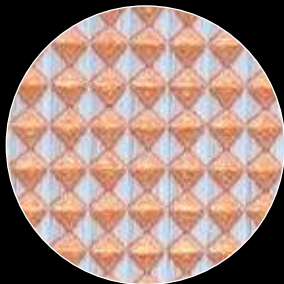
507
Pearl



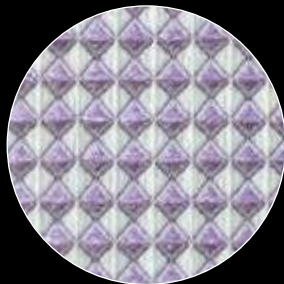
547
Cinnamon



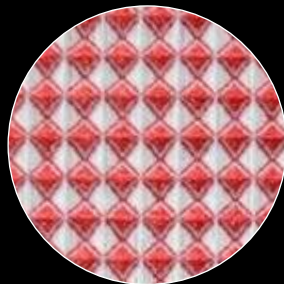
523
Almond



739
Apricot



235
Viola



466
Red Pepper

REF.

SILENCIO® Size 5
Colour number
687350 - 00900 - ###



100 % Trevira CS



DIN EN
13501-1
B-s1, d0



ca. 320 / 520 cm



350 g/m² ± 5%



ca. 2 mm

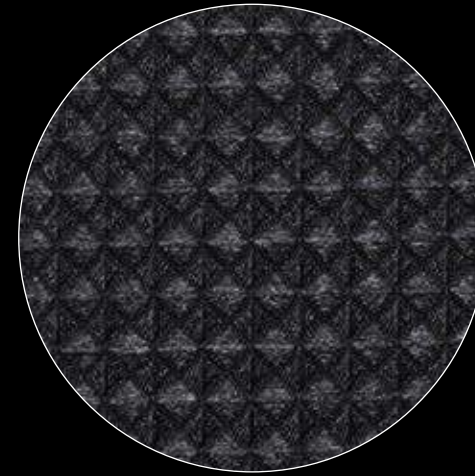


25m / 27yrd

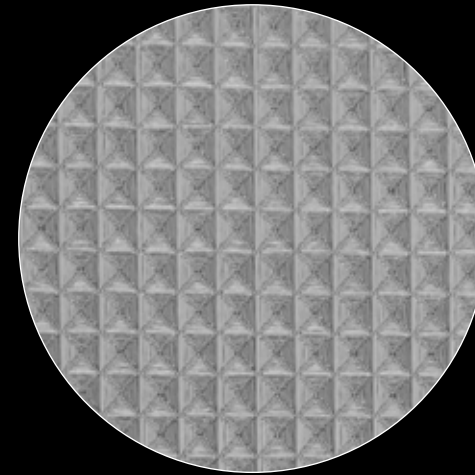
Specs



Further Details



339
Deep Black



311
Solid Grey

PONGS®

SILENCIO® Size 10



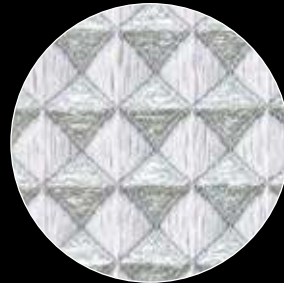
104
Arctic Ice



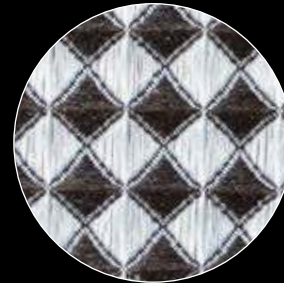
303
Crystal



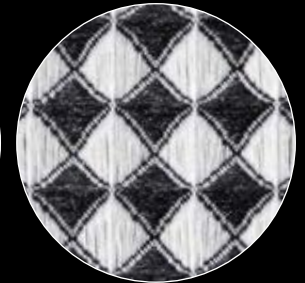
945
Metal



305
Silver Grey



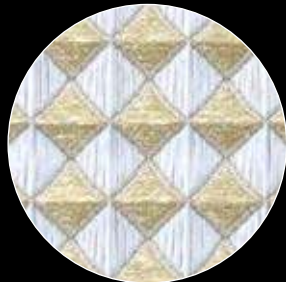
589
Turkish Coffee



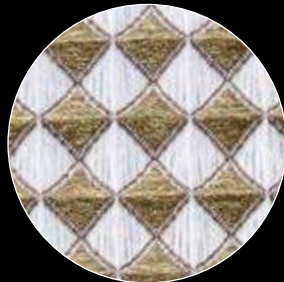
347
Nero



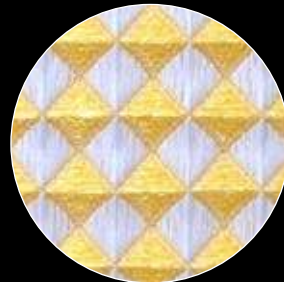
501
Desert Sand



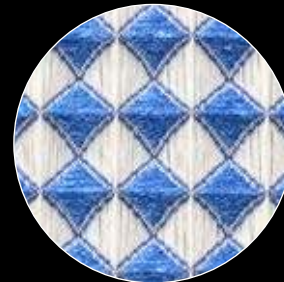
525
Leaves



947
Walnut



733
Canary



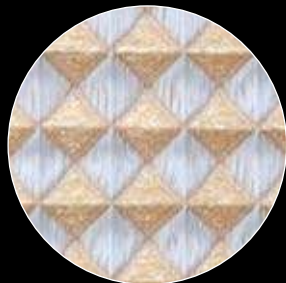
162
Deep Water



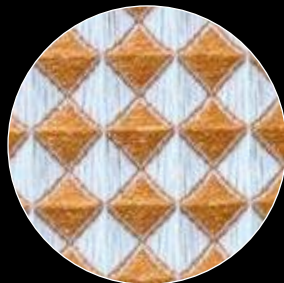
333
Moskito



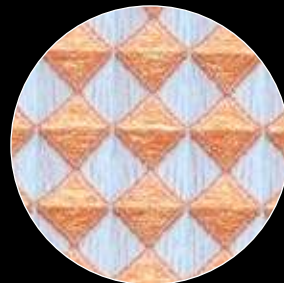
507
Pearl



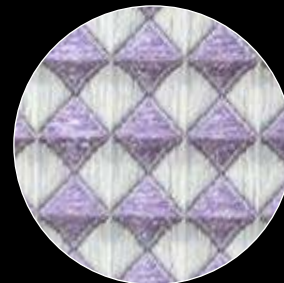
547
Cinnamon



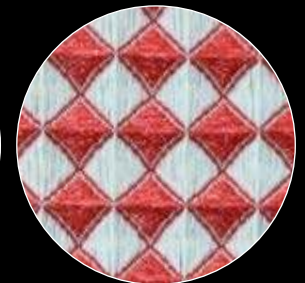
523
Almond



739
Apricot



235
Viola



466
Red Pepper

REF.

SILENCIO® Size 10
Colour number
687351 - 00900 - ###



100 % Trevira CS



DIN EN
13501-1
B-s1, d0



ca. 320 / 520 cm



350 g/m² ± 5%



ca. 4 mm

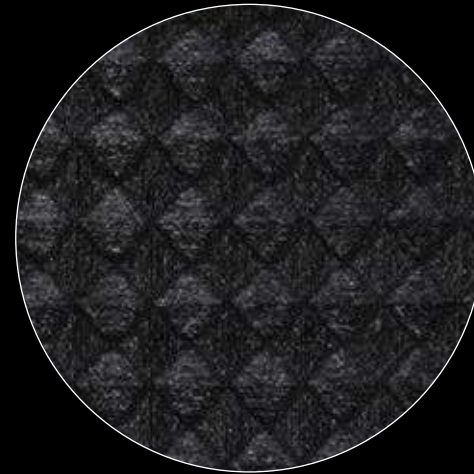


25m / 27yrd

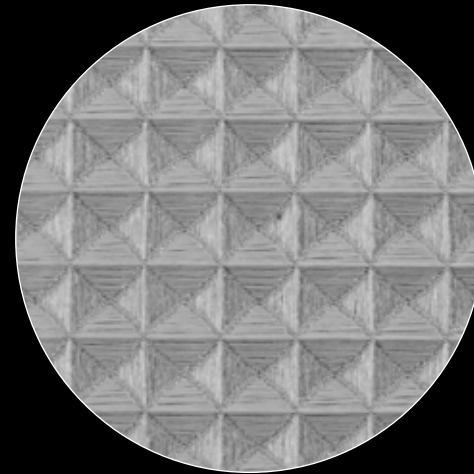
Specs



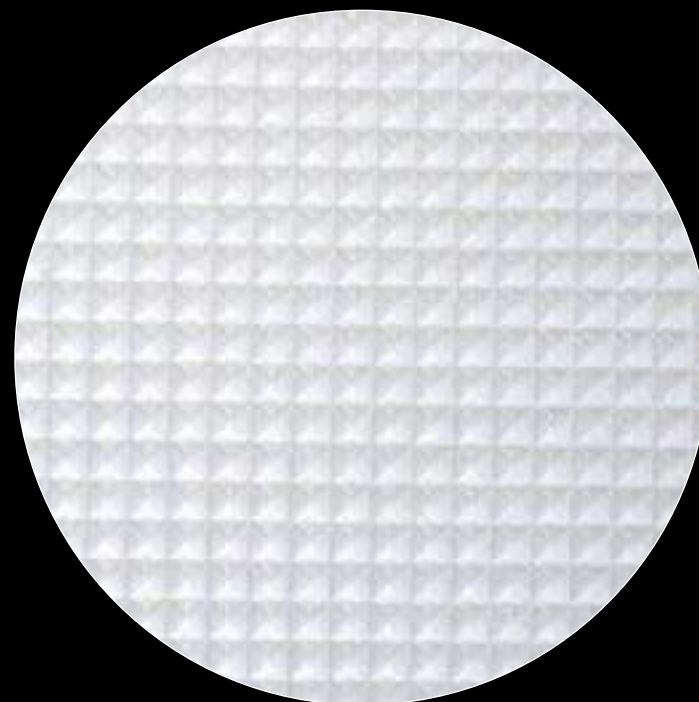
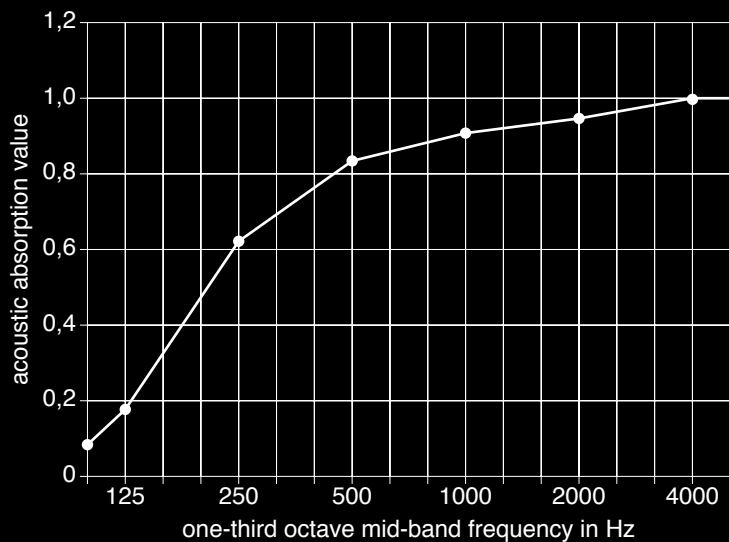
Further Details



339
Deep Black



311
Solid Grey



003
White

| | |
|--------------------------------------|------|
| Acoustic absorption value α_w | 0,85 |
| acoustic absorption class | B |

Type of assembly E-50 according to DIN EN ISO 354.
Textile in front of total 50 mm,
included 2 x 20 mm ISOVER SSP 2 and 10 mm airspace.

REF.

SILENCIO® Size 5
White
687300 - 00900 - 003



100 % Trevira CS



DIN EN
13501-1
B-s1, d0



315 / 505 cm



300 g/m² ± 5%



ca. 2 mm



25m / 27yrd

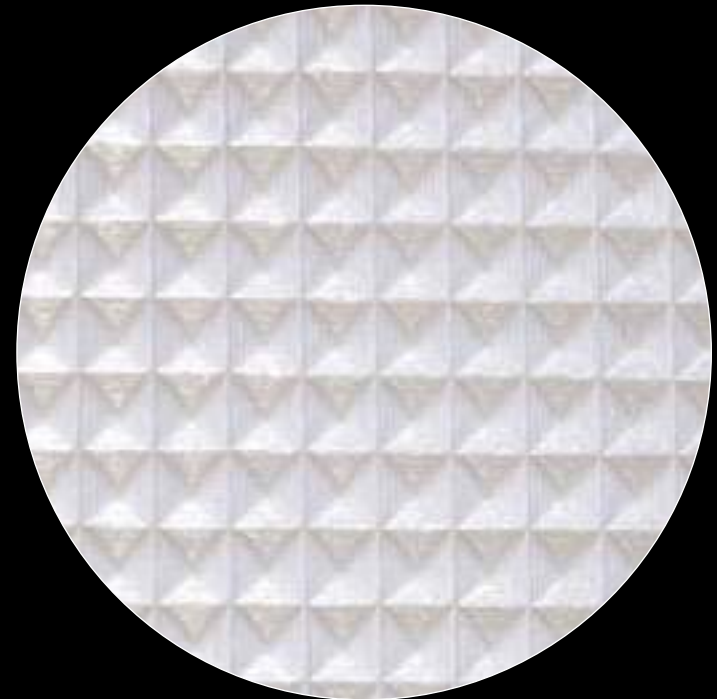
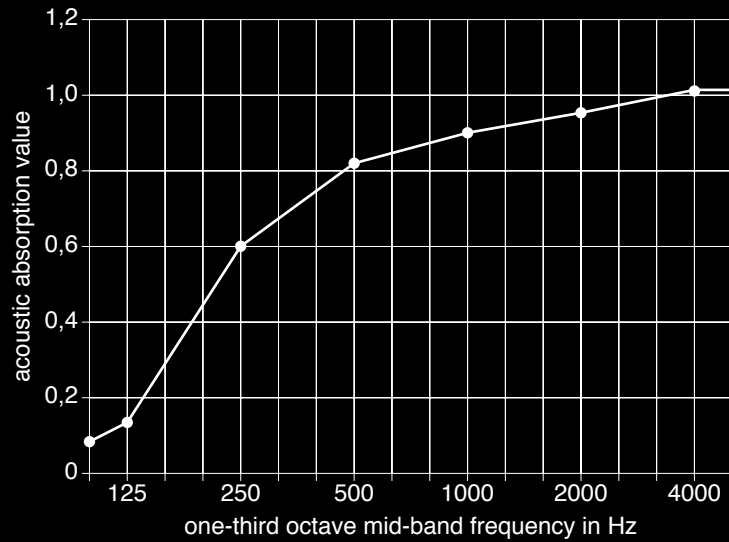
Specs



Further
Details



**PONGS®**



003
White

| | |
|--------------------------------------|------|
| Acoustic absorption value α_w | 0,85 |
| acoustic absorption class | B |

Type of assembly E-50 according to DIN EN ISO 354.
Textile in front of total 50 mm,
included 2 x 20 mm ISOVER SSP 2 and 10 mm airspace.

REF.

SILENCIO® Size 10
White
687301 - 00900 - 003



100 % Trevira CS



DIN EN
13501-1
B-s1, d0



315 / 505 cm



300 g/m² ± 5%



ca. 4 mm



25m / 27yrd

Specs



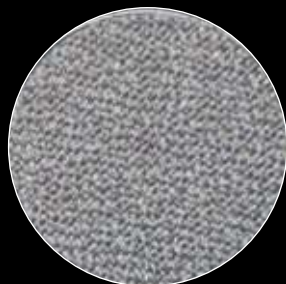
Further
Details



PONGS® AKUSTICO®



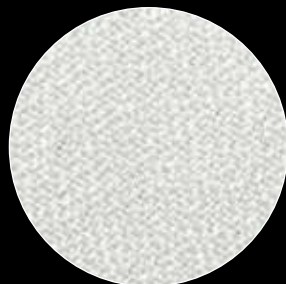
347



331



329



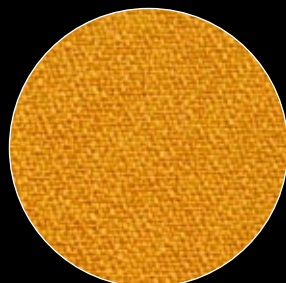
309



303



545



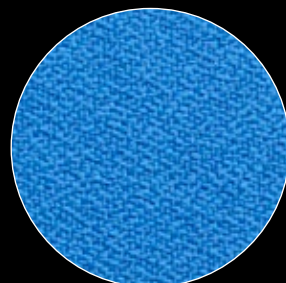
727



638



466



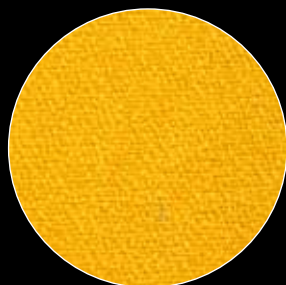
162



235



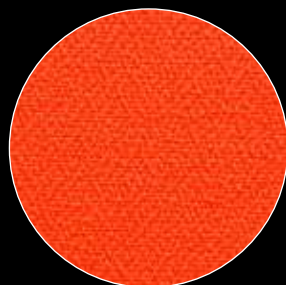
541



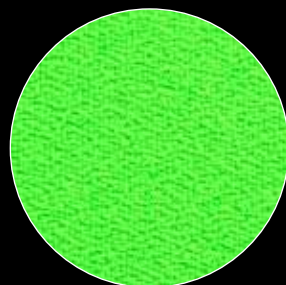
731



628



440



642

REF.

AKUSTICO®
Colour number
506251 - ###



100 % Polyester



DIN EN 13501-1
B-s1, d0 **M1**



270 g/m² ± 5%



ca. 620 μm ± 10



30m/33yrd 60m/66yrd



ca. 155/ 310 cm



100 Pa: 195 l/(m²s)
200 Pa: 342 l/(m²s)
DIN EN ISO 9237



warp: 2668 N (97 N)
weft: 1589 N (123 N)
DIN EN ISO 1421 (13937-2)

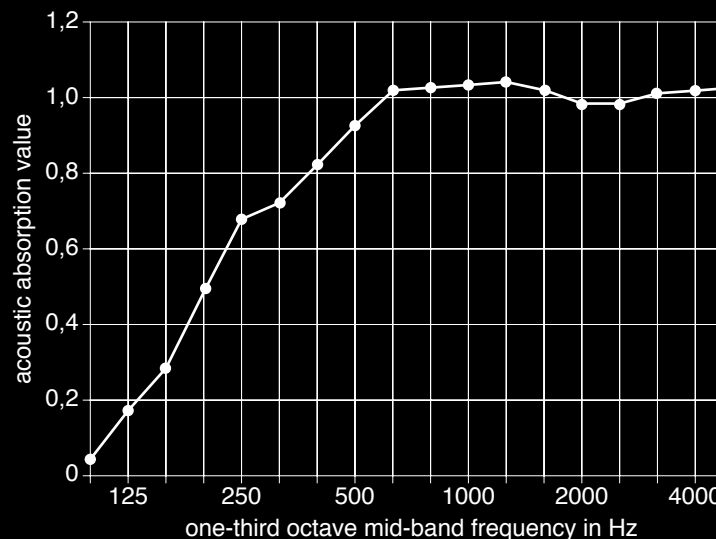


5-6
DIN EN ISO 105-B02

Specs



Further Details



| | |
|--------------------------------------|------|
| Acoustic absorption value α_w | 0,90 |
| acoustic absorption class | A |

Type of assembly E-50 according to DIN EN ISO 354.
Textile in front of total 50 mm,
included 40 mm ISOVER SSP 2 and 10 mm airspace.

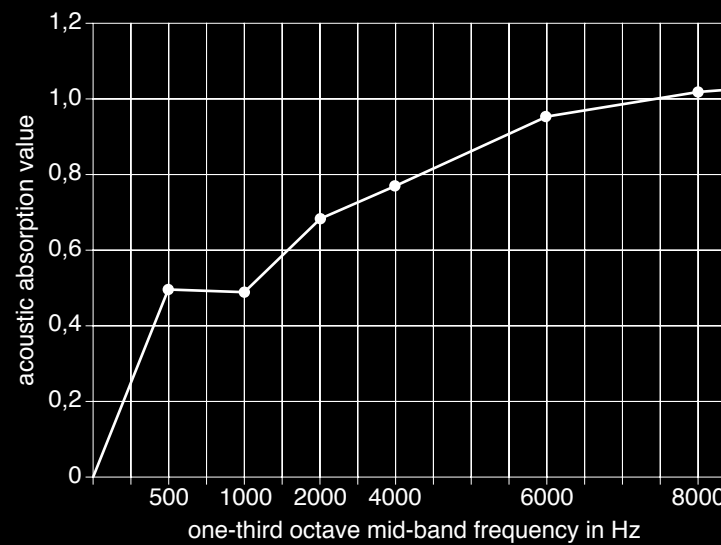
PONGS®

 **PONGS**[®]

Akustikvlies



White



Type of assembly 20 mm Akustikvlies, no foil, in wooden frame

REF.

Akustikvlies
White



100 % Polyester



DIN EN
13501-1
B-s1, d0

B1



400 g/m² ± 5%



ca. 20 mm



20m/ 22yrd



ca. 270 cm

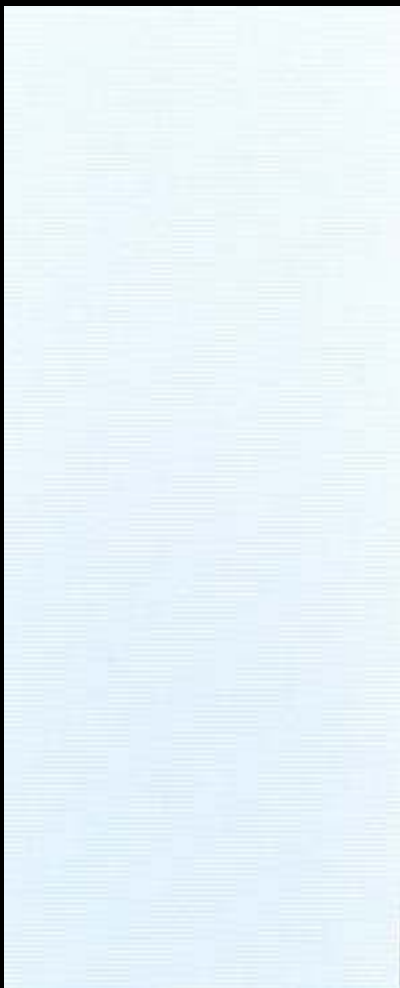
Specs



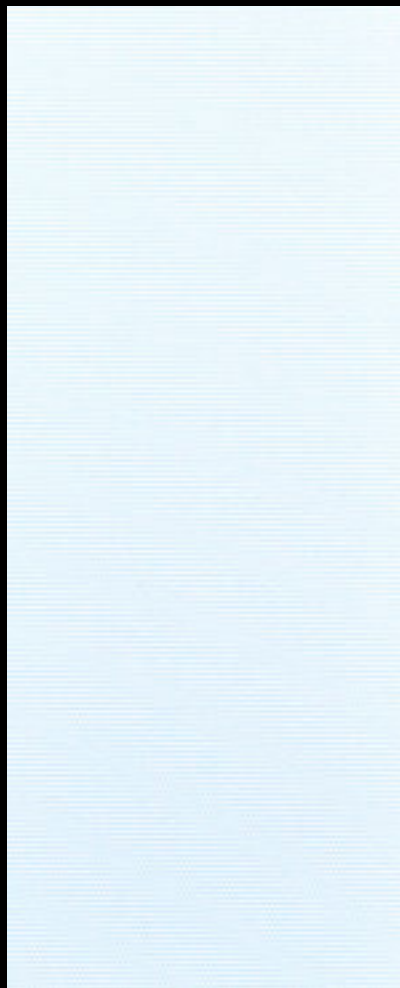
Further
Details



**PONGS**[®]



Artist heavy
564250 - 00900 - 042



Artist Backlite
564252 - 00900 - 083



Artist Mambo
564160 - 00900 - 137

REF.

Artist heavy
Colour number
564250 - 00900 - 042

Artist Backlite
Colour number
564252 - 00900 - 083

Artist Mambo
Colour number
564160 - 00900 - 137



100 % Polyester

100 % Polyester

100 % Polyester



DIN EN
13501-1
B-s1, d0

DIN EN
13501-1
B-s1, d0

DIN EN
13501-1
B-s1, d0



280 g/m² ± 5%

250 g/m² ± 5%

170 g/m² ± 5%



103, 137, 155, 205,
252, 310, 505 cm

103, 137, 155, 252, 310, 505 cm

103, 155, 310, 505 cm

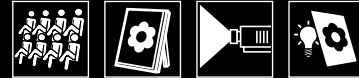


26,9 % (DIN EN 410)

31,9 % (DIN EN 410)

26,9 % (DIN EN 410)

Specs



Further
Details

All fabrics can be digital printed with individual images.

DESCOR® PREMIUM solely applies to building professionals.
The system is exclusively used by specialists trained in this technique.
A list of recommended approved fitters is available on request.



 **DESCOR**[®]
WALL & CEILING SYSTEM

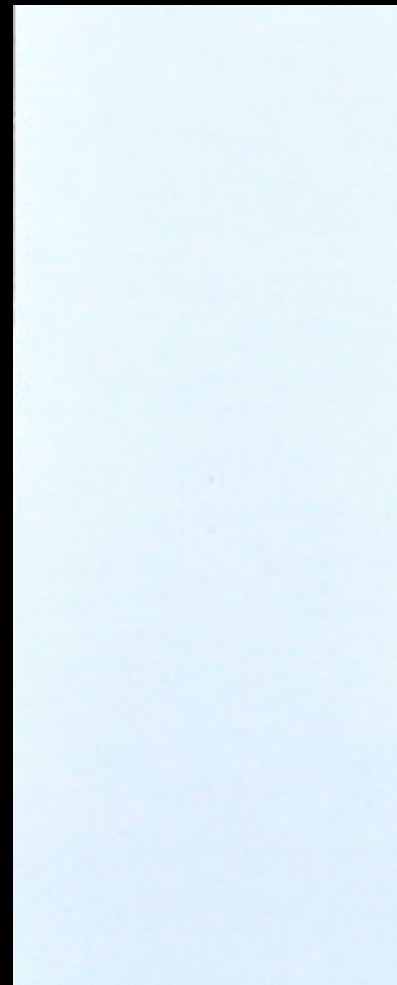
Backlit fabrics



Softimage lightbox
599180 - 00900 - 173



Backlite Premium
599280 - 00900 - 140



Stretch Twill Soft
584097 - 00900 - 123

REF.

Softimage lightbox
Colour number
599180 - 00900 - 173

Backlite Premium
Colour number
599280 - 00900 - 140

Stretch Twill Soft
Colour number
584097 - 00900 - 123



100 % Polyester

100 % Polyester

100 % Polyester



DIN EN
13501-1
B-s1, d0

DIN EN
13501-1
B-s1, d0

DIN EN
13501-1
B-s1, d0

M1



205 g/m² ± 5%

280 g/m² ± 5%

115 g/m² ± 5%



103, 155, 252, 310, 505 cm

103, 155, 252, 310, 505 cm

103, 155, 310 cm

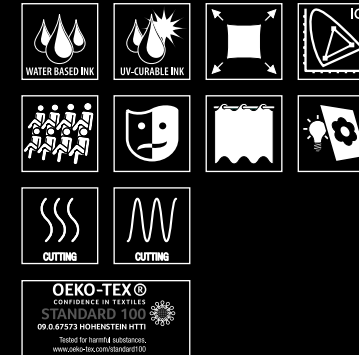


35,7 % (DIN EN 410)

14,5 % (DIN EN 410)

26,9 % (DIN EN 410)

Specs



Further
Details

All fabrics can be digital printed with individual images.

DESCOR® PREMIUM solely applies to building professionals.
The system is exclusively used by specialists trained in this technique.
A list of recommended approved fitters is available on request.

DESCOR®
WALL & CEILING SYSTEM

 **DESCOR**[®]
WALL & CEILING SYSTEM

Blackout fabric



Softimage Contrast
599150 - 00900 - 150

REF.

Softimage Contrast

Colour number
599150 - 00900 - 150



100 % Polyester



DIN EN
13501-1
B-s1, d0



230 g/m² ± 5%



103, 155, 252, 310, 505 cm

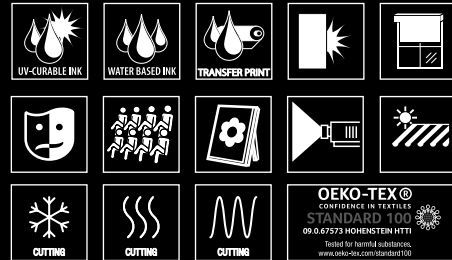


blank: 74.14
DIN 5033-1



blank: 7
DIN EN ISO 105-B02

Specs



Further
Details

The fabric can be digital printed with individual images.

DESCOR® PREMIUM solely applies to building professionals.
The system is exclusively used by specialists trained in this technique.
A list of recommended approved fitters is available on request.

